

# 1341 Sandy Hill Road

## Norristown, PA 19401



## LEASE

Rear Portion of free standing  
Retail / office building

**Rear - 3,270 sq ft**

\$14.75 per sq ft / \$4,019 per month + janitorial

Private entrance

Parking For 60+/- Cars

Freestanding Building Provides  
Maximum Exposure

Abundant parking and on site public transportation

Surrounded by numerous retail/ restaurant and  
banking amenities

Pylon signage on Sandy Hill Road

Easy Accessibility to Route 202  
Minutes to Rts. 276, 476 and 76

Gas/Hot Water Heat, Central A/C

Join Primerica Services



**J.M. BASILE**  
& ASSOCIATES, INC.

COMMERCIAL & INDUSTRIAL REALTORS

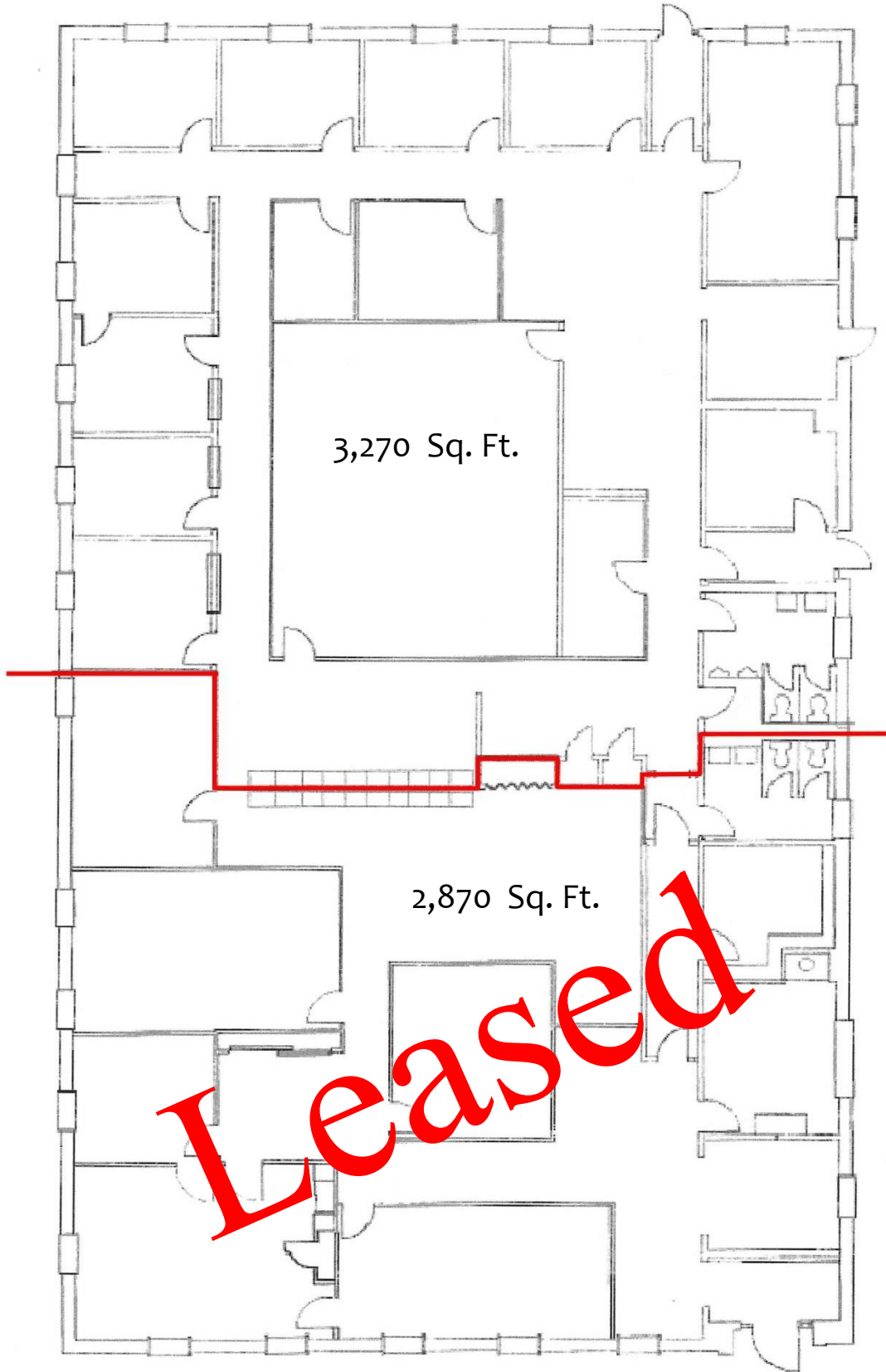
133 Ivy Lane, King of Prussia, PA 19406

Tel. 610-768-4000 Fax 610-768-4006

Suzanne L. Basile, CCIM  
sbasile@jmbasile.com

The foregoing information was furnished to us by sources which we deem to be reliable, but no warranty or representation is made as to the accuracy thereof. Information is subject to errors, omissions, change of price, prior sale or withdrawal without notice.

Floor Plans  
6,140 Sq. Ft.



NOT TO SCALE