

# Bridgeport Professional Building

207 West Fourth Street, Bridgeport, PA 19405



## Lease

**Suite B - 2<sup>nd</sup> Floor, 1,350 Sq. Ft. – \$17.00 Per Sq. Ft. / \$1,912.00 Per Month All Inclusive**  
**Suite C - Lower Level, 2,550 Sq. Ft. – \$15.00 Per Sq. Ft. / \$3,187.00 Per Month All Inclusive**

Private Entrances / 24/7 building access

Join DeKalb Chiropractic Center

Zoned NC– Neighborhood Commercial Allowing For Most Commercial Uses

Surrounded by numerous retail, restaurant and banking amenities

Immediate Occupancy Available

Abundant parking and on site public transportation

Signage Available On Heavily Traveled Route 202 (DeKalb Street)

**J.M. BASILE & ASSOCIATES, INC.**  
COMMERCIAL & INDUSTRIAL REALTORS

133 Ivy Lane, King of Prussia, PA 19406

Tel. 610-768-4000 Fax 610-768-4006

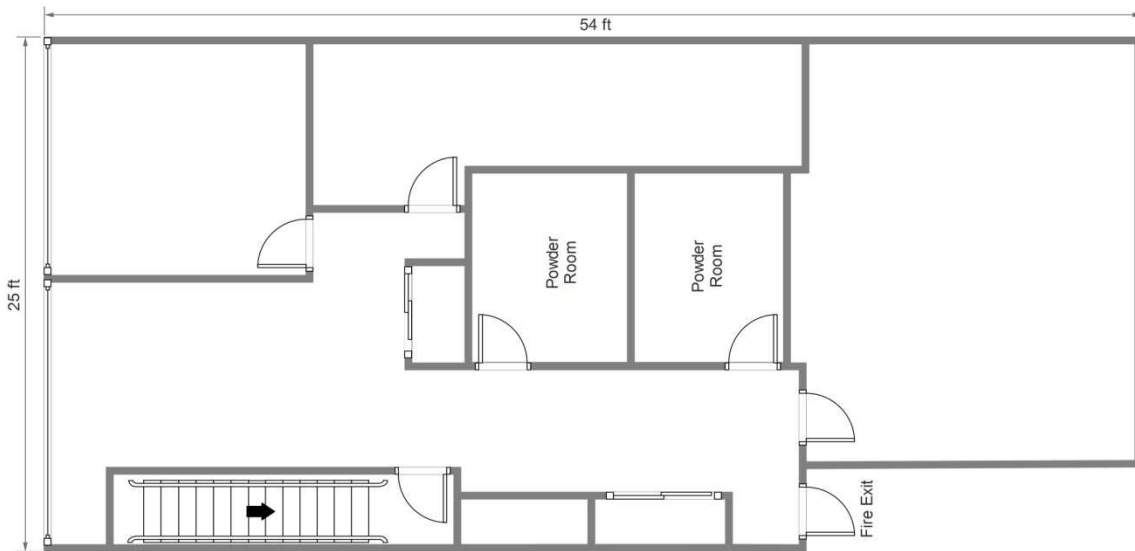
Suzanne L. Basile, CCIM

[sbasile@jmbasile.com](mailto:sbasile@jmbasile.com)

The foregoing information was furnished to us by sources which we deem to be reliable, but no warranty or representation is made as to the accuracy thereof. Information is subject to errors, omissions, change of price, prior sale or withdrawal without notice.

Floor Plan

Note: Not To Scale



Suite B—Second Floor  
1,350 sf

Suite C—Lower Level  
2,550 sf

