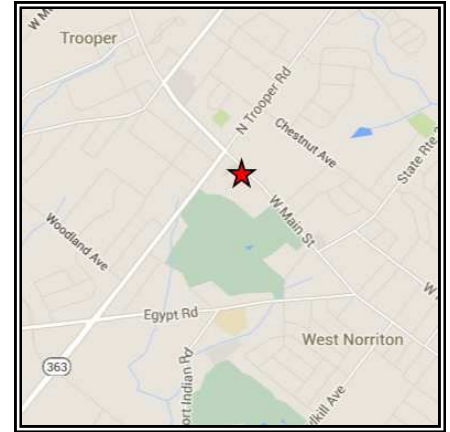


LEASE

Jeffersonville Corporate Center

2502-2506 West Main Street, West Norriton Township, PA 19403



2502 Main Street

Suite 1 - 350 +/- SF First Floor Office Space

\$14.50 Per Square Foot / \$425.00 Per Month Plus Utilities & Janitorial

2506 West Main Street

Suite C - 1,300 +/- SF Second Floor Office Space

\$12.50 Per Square Foot / \$1,354.17 Per Month Plus Electric & Janitorial

- Located Just Off Ridge Pike, Minutes From Routes 202, 422 And 76

- Large Plate Glass Windows In Some Spaces

- Gas / Electric Hot Air Heat, Central A/C in Office Areas

- Zoned LC - Limited Commercial, Allowing For Most Commercial Uses

- Signage Available On Heavily Traveled West Main Street

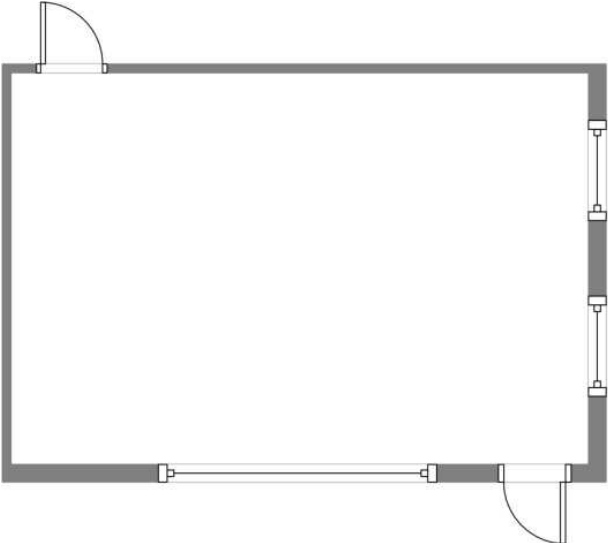
J.M. BASILE & ASSOCIATES, INC.
COMMERCIAL & INDUSTRIAL REALTORS

133 Ivy Lane ♦ King of Prussia PA 19406 ♦ (610) 768-4000 ♦ Fax (610) 768-4006 ♦ jmbasile.com

The foregoing information was furnished to us by sources which we deem to be reliable, but no warranty or representation is made as to the accuracy thereof. Information is subject to errors, omissions, change of price, prior sale or withdrawal without notice.

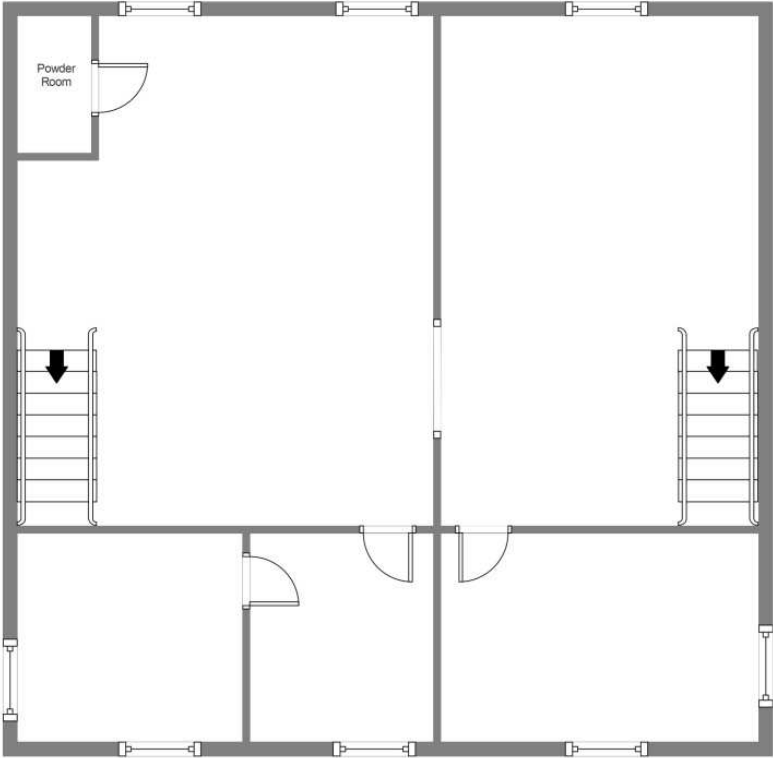
Floor Plans

Suite 1



First Floor 350 SF

Suite C



Second Floor 1,300 SF