

# 430 WEST MAIN STREET TRAPPE, PA 19426



## LEASE – GREAT END CAP!

**1,280 sq. ft. / \$23.00 per sq. ft. / \$2,453.00 per month plus utilities**

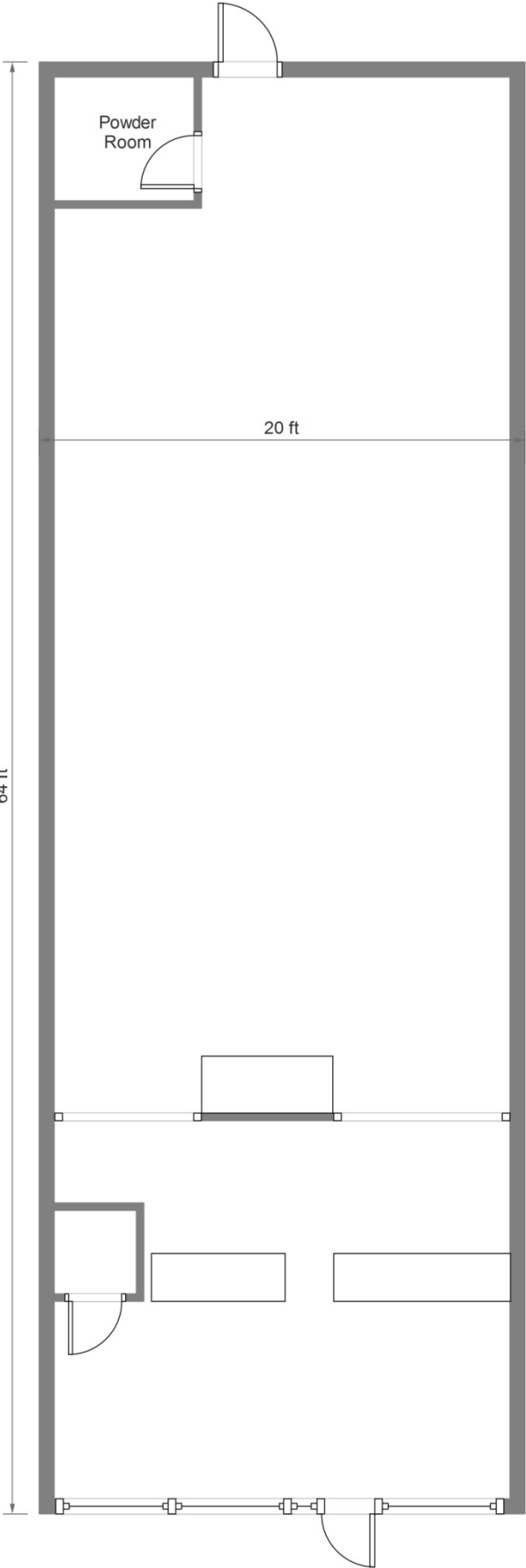
- ✓ Gas Hot Air Heat & Central Air Conditioning
- ✓ High Visibility Property with Signage Available on Major Thoroughfare
  - ✓ Plenty of parking to the front and side of the store
- ✓ Easy Accessibility To Major Highway Arteries - Walk to Stores, Shops and Restaurants
  - ✓ Zoned VC – Village Commercial Allowing Most Commercial and Professional Uses
- ✓ Join Sherwin Williams Paints, Palermo's Pizza, Capt'n Chucky's Crab Cakes and Joy Nails & Spa
  - ✓ Right next door to The Trappe Tavern

**J.M. BASILE & ASSOCIATES, INC.**  
COMMERCIAL & INDUSTRIAL REALTORS

133 Ivy Lane, King of Prussia, PA 19406  
Tel. 610-768-4000 Fax 610-768-4006  
Suzanne L. Basile, CCIM  
[sbasile@jmbasile.com](mailto:sbasile@jmbasile.com)

The foregoing information was furnished to us by sources which we deem to be reliable, but no warranty or representation is made as to the accuracy thereof. Information is subject to errors, omissions, change of price, prior sale or withdrawal without notice.

# Floor Plans



1,280 Sq Ft

Not To Scale